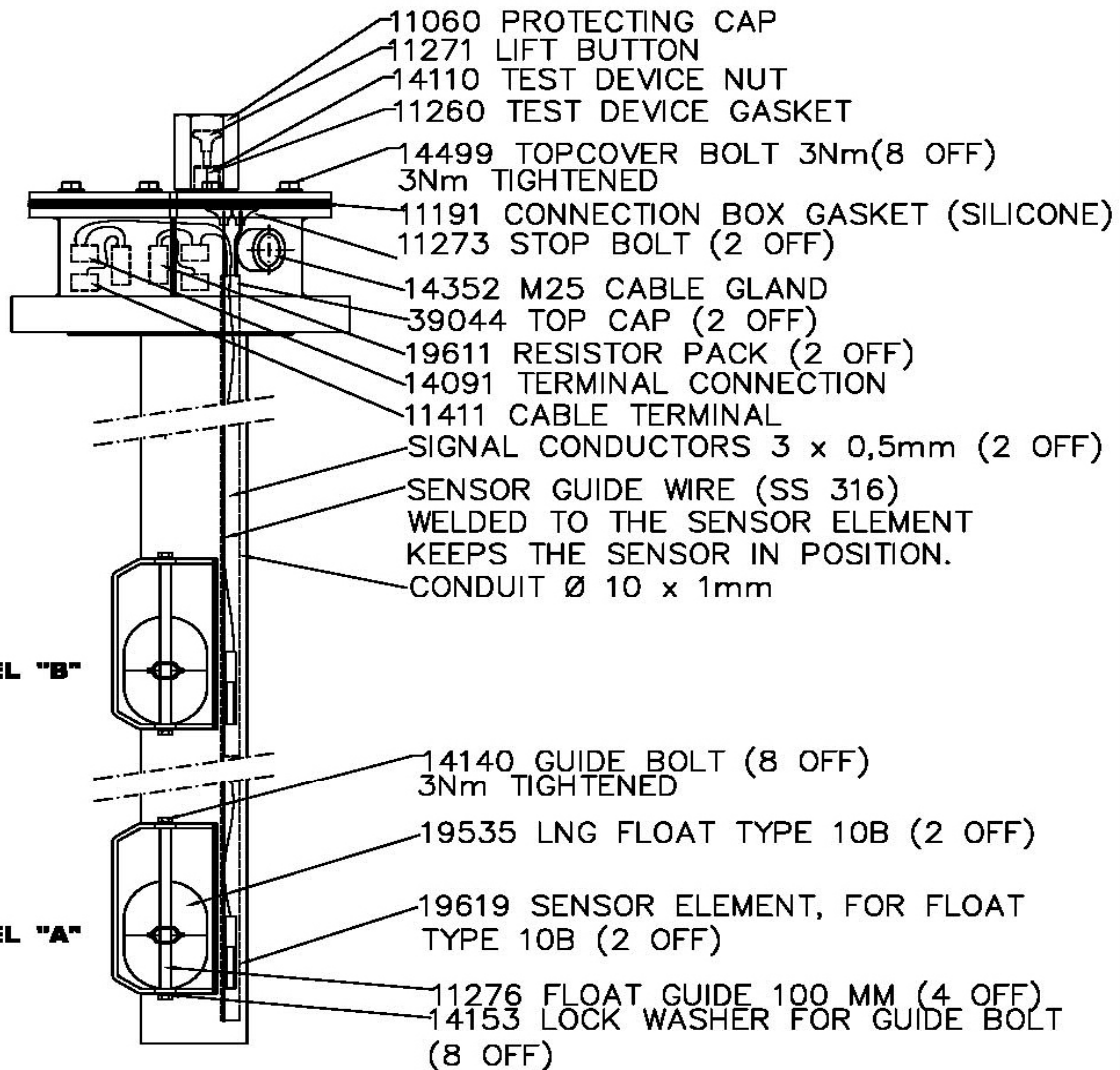


Most common parts for HL/HHL systems

Part no	Description
	Electronic cabinets
12010	Common alarm unit CU1 Out of production
12040	Common unit CU2
15503	Fuse to Common alarm unit 5A
12036	Alarm Unit1 (OAU-01.1) Intr.safe (Replaces 12030)
34180	Intrinsically Safe Amplifier, Turk-MK13
34850	Ex Relay, Turck MS13-231 Ex0 220VAC
34853	Ex Relay, Turck MS13-231 Ex0 115VAC
12120	Switch Slave PCB
12100	Switch Master PCB
51150	Led connection board
34915	Red led
34914	Yellow led
34883	Led 8x red
34882	Led 8x yellow
34847	Power Puls 3A 72W
34831	Power Puls 4,2A 100W
34893	Power supply DC/DC 19-32V 50W (Acte)
34894	Power supply DC/DC 19-32V 100W (Acte)
34920	Impulse push button
34921	Toggle Push Button
94901	Buzzer
34912	Contact element 2 NO
34927	Contact element 2 NO/1NC
34903	Countersunk module for panel 24*24mm (black)
34902	Countersunk module for panel 24*30mm (black)
34212	Countersunk module for panel 24*24mm (black) w. protection cover
34911	Switch cap red
34907	Switch cap blue
34908	Switch cap green
34910	Switch cap white
34874	Blind cover 24x24
34290	Bulb for switch
34156	Relay 24VDC 1-pole, Omron
34157	Relaysocket 1-pole, Omron
34163	Relay 24VDC 2 pole, Omron
34170	Relaysocket 2-pole, Omron
34167	Relay 24v 1-pole, PLC-BSP 24DC/21AU, complete
34164	Relè 24VDC, 1pole for sensor powering, complete
34169	Relay 24v 2-pole, PLC-RSP-24DC/21, complete
11413	Single terminal
11414	Double terminal
11415	Triple terminal
34400	Earth connector
11433	Diode Module
41019	Door stopper for Rittal cabinets, 1 complete kit
96186	Door stopper for Eldon cabinets



19619 SENSOR ELEMENT(REEDSWITCH),
 IS REPLACEABLE WITHOUT GAS FREEING.

NEODYMIUM MAGNET INSIDE THE FLOAT
 ACTIVATES THE REEDSWITCH INSIDE
 THE SENSOR ELEMENT TO A CLOSED
 (FAIL SAFE) POSITION WHEN
 TANK LEVEL IS BELOW ALARM HEIGHT.

REV/SIGN/DATE: 1/RE/30.01.03		2/RE/12.06.03		3/RE/17.06.05		4/RE/23.01.07		5/SOM/26.04.07.	
PROJECTION METHODE E				IF NOTHING ELSE IS DECLARED, TOLERANCE: DIM.: NS-ISO 2768 M THREAD: 6g/6H				OMICRON TØNSBERG - NORWAY	
SCALE	1:4	HIGH LEVEL & OVERFILL SENSOR				PAGE 1 OF 1		SHEET SIZE: A4	
DRAWN	28.12.02 RE	TYPE HHL 8003A "LNG"				REV:		5	
CHECKED	28.12.02 RH	PART LIST				FILE: Tek\HL\MD			
APPROVED	28.12.02 RE								